

# COLLAR

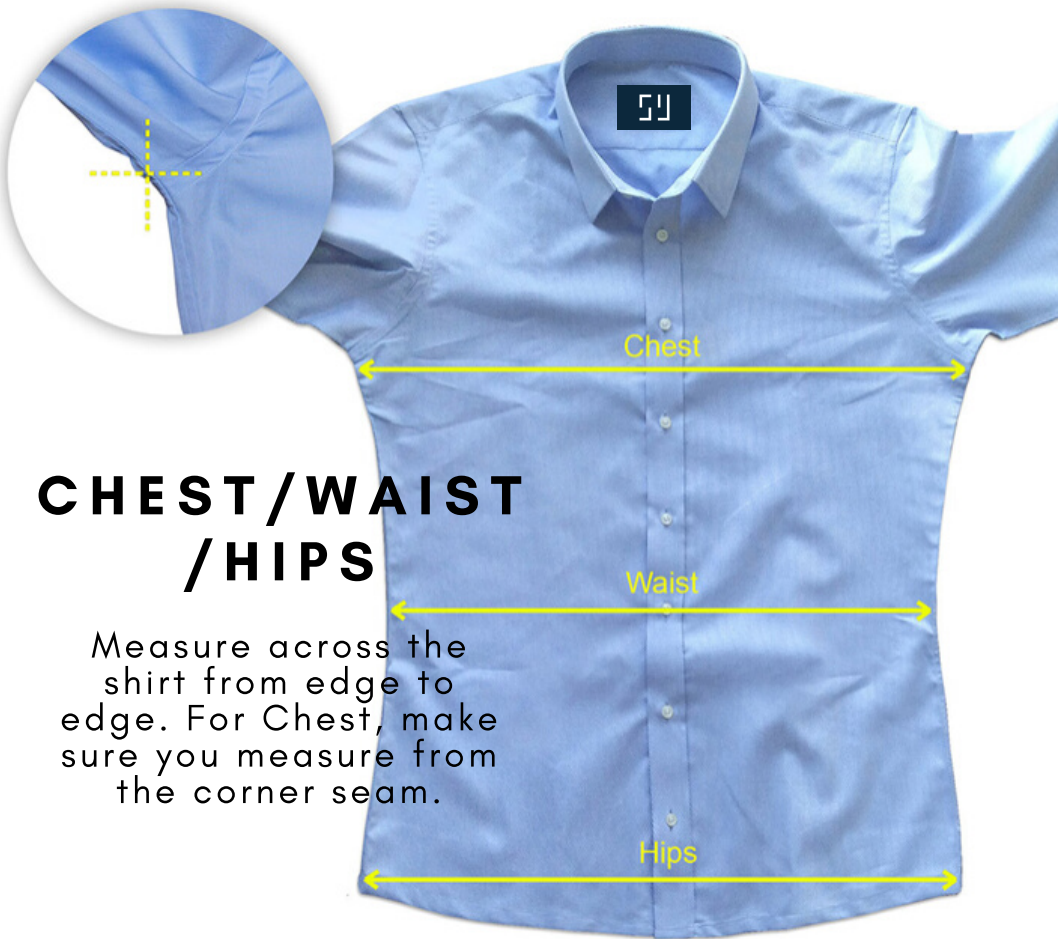
The collar measurement should be taken from the outer edge of the buttonhole to the center of the collar button when the collar is spread flat.





# SHIRT LENGTH

Measure from the seam at the top of the shirt down to the edge at the bottom of the shirt.



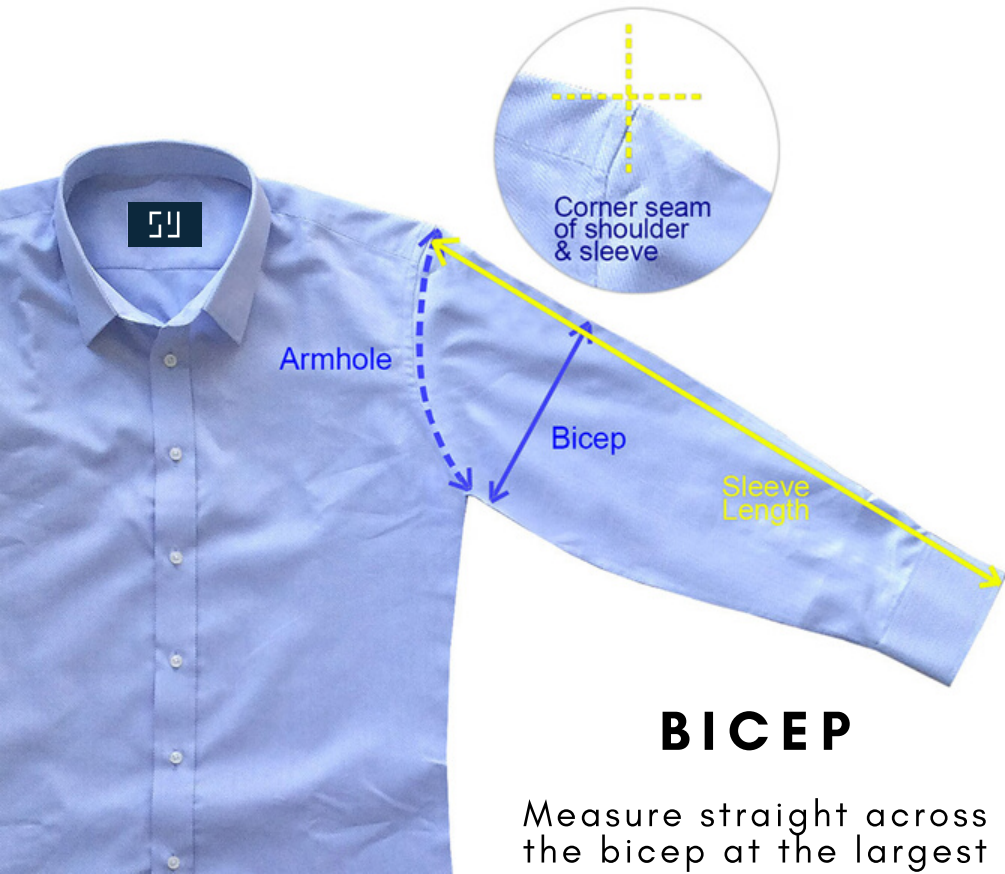
## CHEST/WAIST /HIPS

Measure across the shirt from edge to edge. For Chest, make sure you measure from the corner seam.



# ARMHOLE

The arm hole measurement should be taken as a curved line from the shoulder seam to the lower corner where the sleeve meets the body.



Armhole

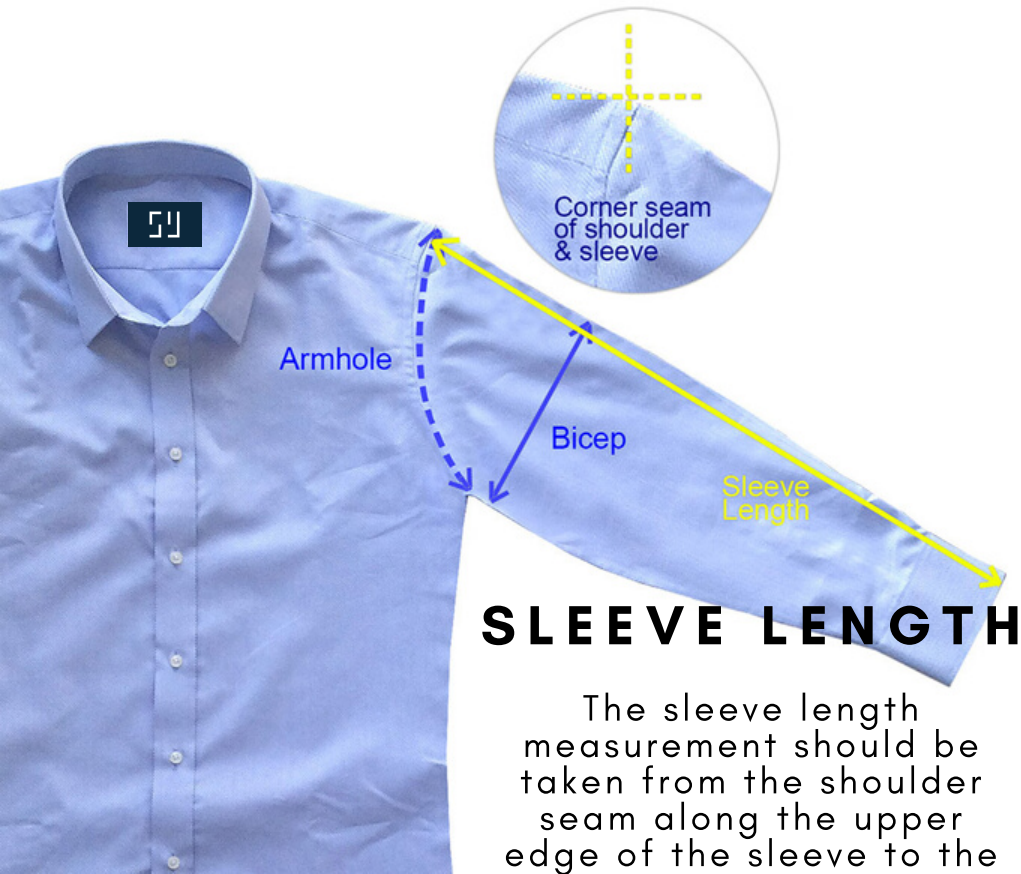
Bicep

Sleeve Length

Corner seam of shoulder & sleeve

# BICEP

Measure straight across the bicep at the largest portion



Corner seam  
of shoulder  
& sleeve

Armhole

Bicep

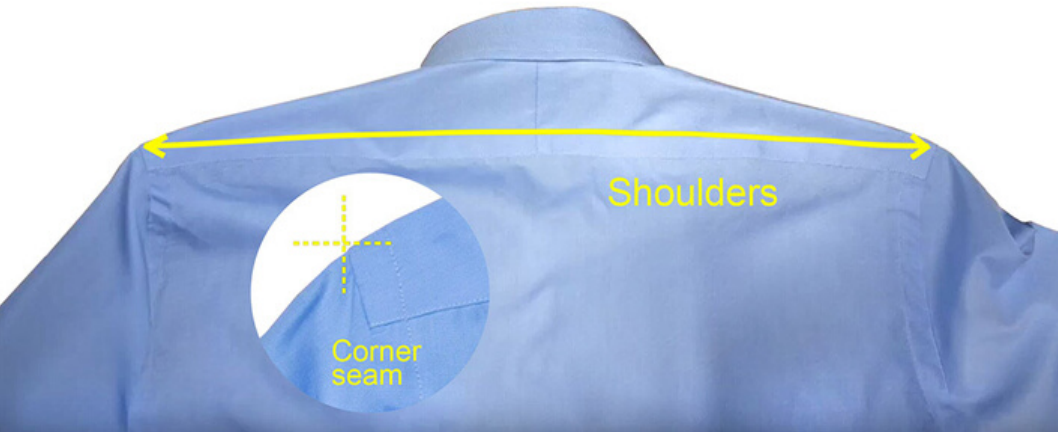
Sleeve  
Length

# SLEEVE LENGTH

The sleeve length measurement should be taken from the shoulder seam along the upper edge of the sleeve to the edge of the cuff.

# SHOULDER

The shoulder width measurement should be taken between the shoulders at the sleeve seam.



# CUFF

The cuff measurement should be taken when the cuff is spread flat. Measure from the outer edge of the cuff button hole to the center of the button.

